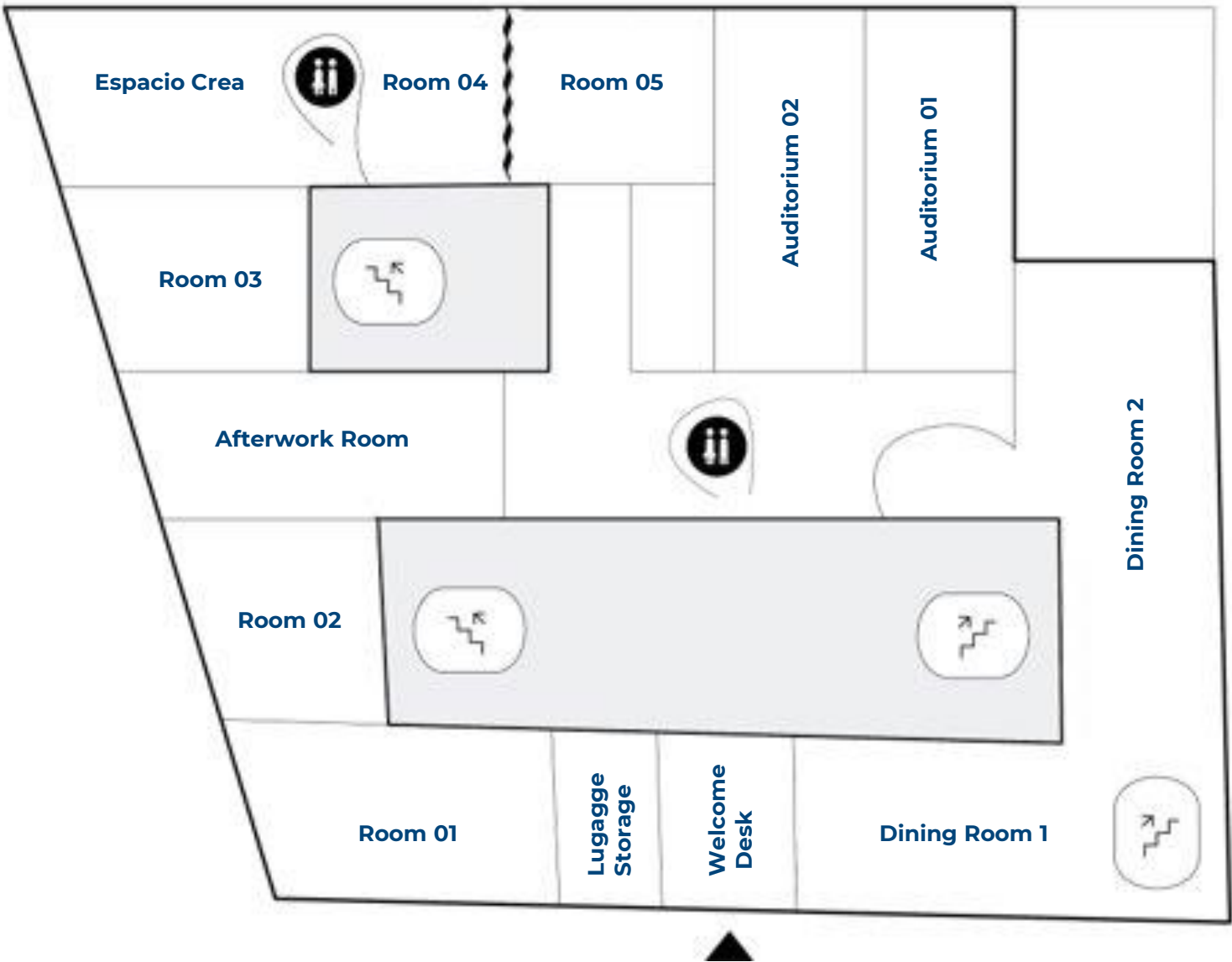


The background is a light blue architectural floor plan. It features various room layouts, including a kitchen with a sink and stove, a bathroom with a toilet, and a living area. Dimensions like '8'0"', '11'0"', and '10'0"' are visible. Labels such as 'D/W', 'ST', 'F', 'CP', and 'EP' are scattered throughout the plan. A circular table with four chairs is shown in the upper left corner.

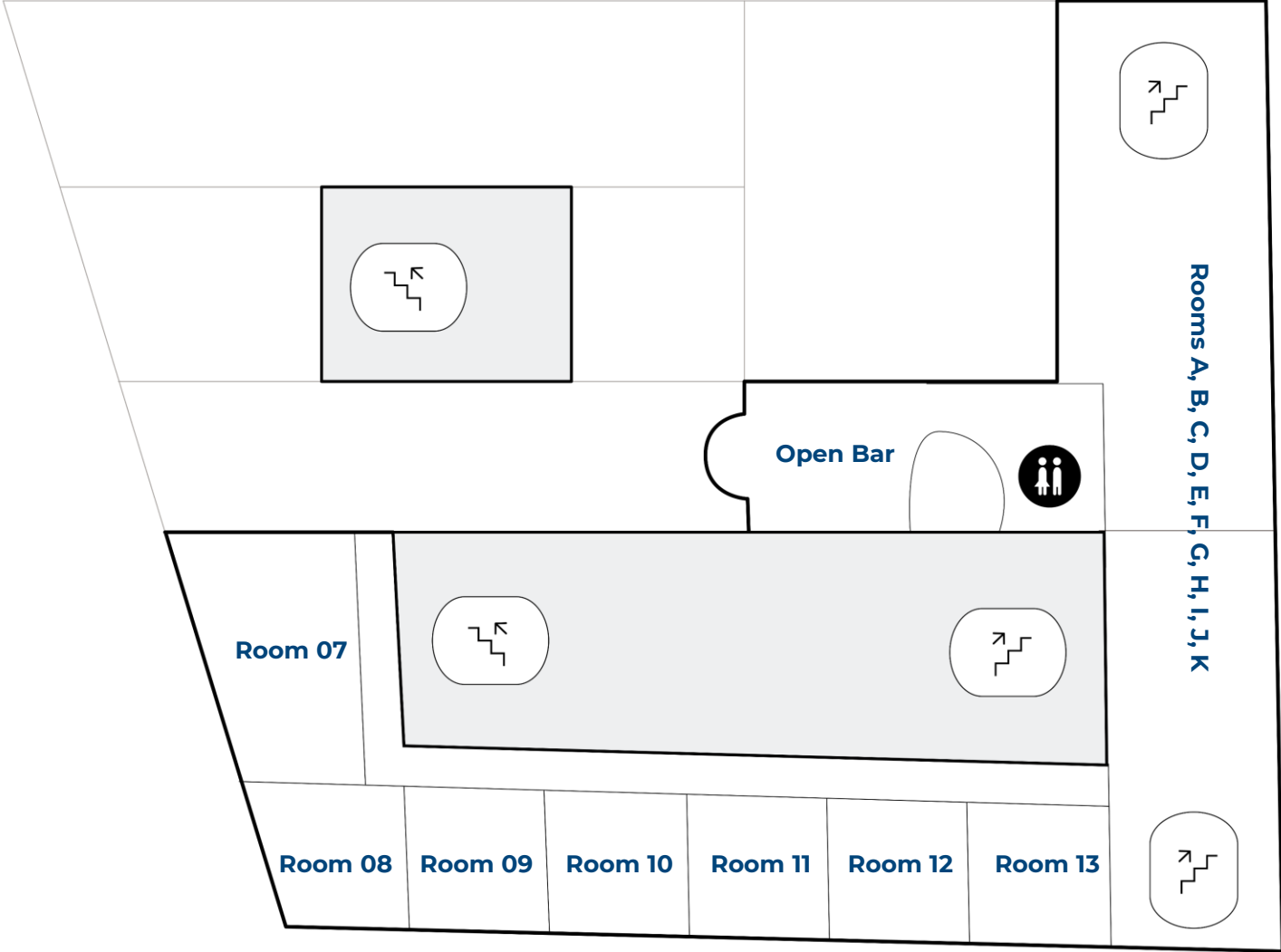
FLOOR PLANS

E U R O F O R U M

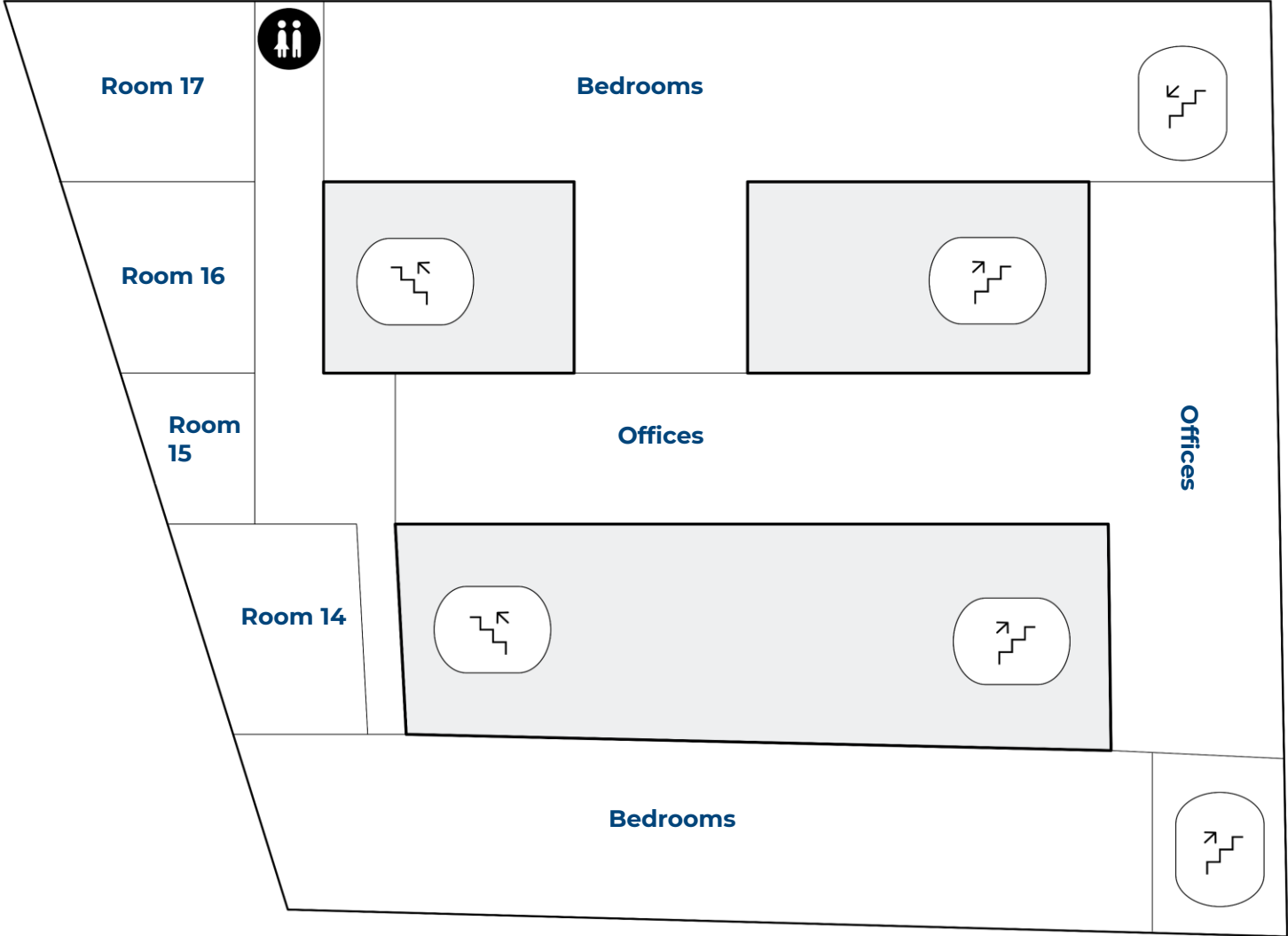
Palacio de los Infantes – FLOOR 0



Palacio de los Infantes – FLOOR 1



Palacio de los Infantes – FLOOR 2





THANK YOU

Come and live an authentic Euroforum experience!

E U R O F O R U M

+34 918 967 000

info@euroforum.es

euroforum.es